

Customer :

customer

Customer part :

customer part

Comment :

Comment

S1=7.11

S2=5.66

Tmax=460

Tp S2=499.0

PI=0.56

HI=110

Sample =1699.10

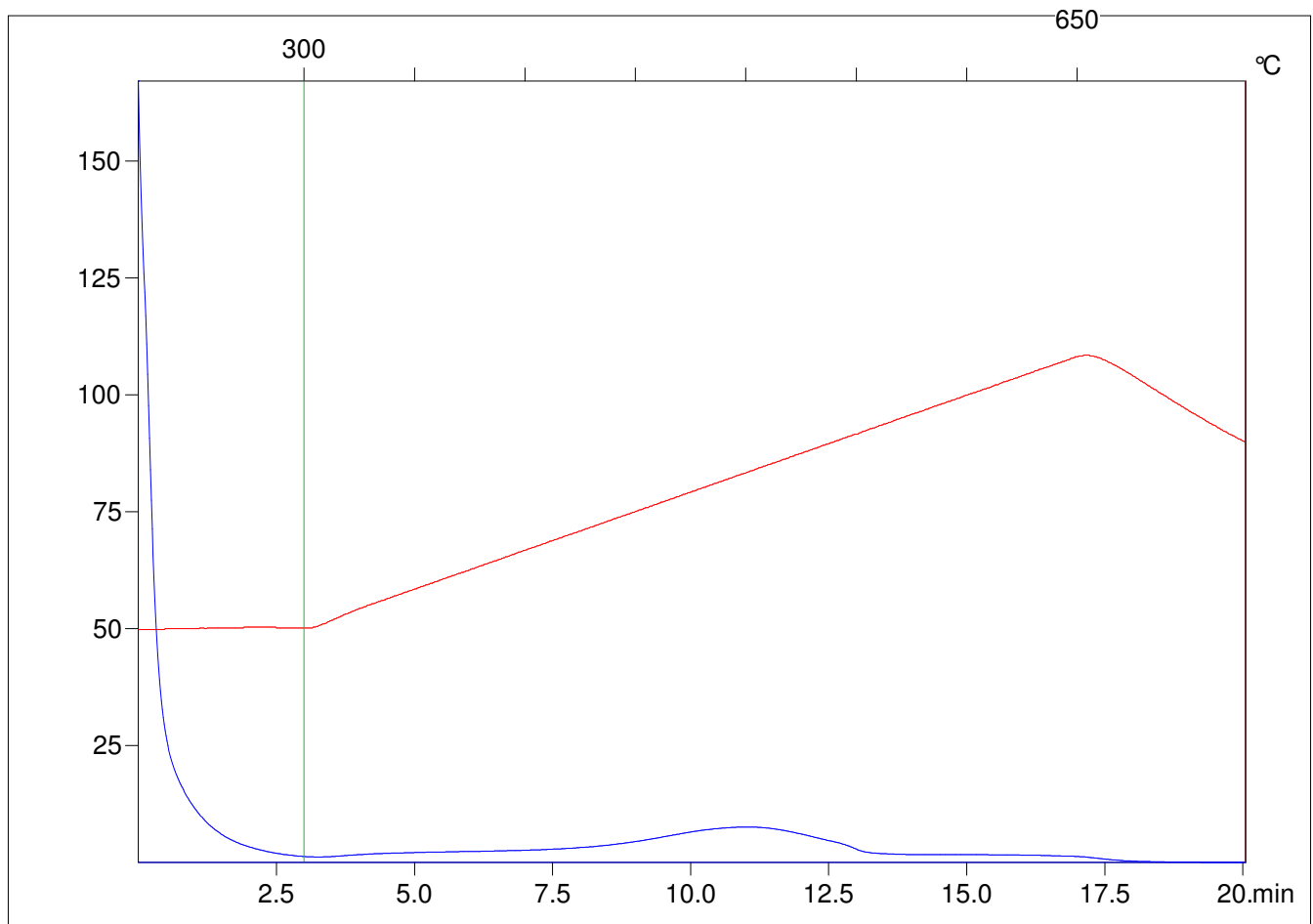
Method =Bulk Rock

Cycle=Basic

KFID(10*9)=1444

Qty =70.3

TOC=5.15



C:\VINC\PK1_1792\PK079.R00 : FID pyrolysis graphic

State

Pyro Status

Oxi Status